

*Smiley Bunch K-camp * Happy Dayz*

*Teen Spirit * Ball Hockey Camp*

Parent Information summer camp guide 2011

"Let the children sing, jump, laugh, scream and dance...as long as they don't sin."

- Don Bosco -



(T) 514-648-6421 (F) 514-648-6404 summercamp@dbylc.com 11991 Pierre Baillargeon RDP Since 1997
YLC Camp Responsibles: Theo Vecera and Anna Tafuto NON-PROFIT SUMMER CAMP PROJECT

Quick camp info!

Camp starts: Monday, June 27

Camp ends: Friday, August 12th

*Optional week: Monday, July 25th to Friday, July 29th, 2011
(first week of construction holiday)*

Daycare: 7am to 9am and 4pm to 6pm

Centers: 9am to 4pm everyday



What is the YLC?

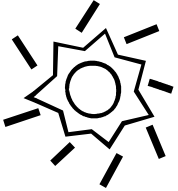
The *Don Bosco Youth Leadership Centre* is a non-profit youth and community centre for all ages focusing primarily on youth and teenagers. We have since expanded our programming to reach out to adults and families. The YLC has been structured to develop all necessary aspects (social, cultural, moral, educational and recreational) of young people today. We reach out to over 1000 youth, adults and families every year and use Don Bosco's preventive system as our leadership approach.

Visit dbylc.com for info on all our programming! We are a non-profit organization that works with minimal funding and yet produce exceptional results compared to those organizations that receive stable and consistent funding. Join our fundraising team! 514-648-6421 or ylctheo@hotmail.com

The small profit that is made from our summer camp program is absorbed into YLC programming for the year and helps to pay for salaries and equipment and materials.

Common camp questions and answers 2011

Smiley Bunch K-camp, Happy Dayz, Teen Spirit, Ball Hockey camp



Parents, don't see your question? Please contact us at 514-648-6421 (please leave a message)

Please note that on the first day of camp, you will receive a parent information booklet that has the program calendar and other information. Your child's camp T-shirt will be given out during the first week and should be worn only on outings or special events.

ALL INFORMATION IS SUBJECT TO CHANGE (UPDATED: March 28th, 2011)

Question 1: Where does my child go?

- For Smiley Bunch kindergarten camp, the center will be at Maria Ausiliatrice church hall.
- For grades 1 and 2, it will be at Leonardo Da Vinci School.
- For grades 3 and 4, it will be on the YLC's 2nd floor.
- For grades 5 and 6, it will be on the YLC's 3rd floor.
- For Teen Spirit, it will be in the YLC's lounge room.
- For the Ball Hockey camp, it will be held at Michealangelo school.
- Please note that entrance to the YLC's camp centers is by the parking lot.

Question 2: How does Daycare work?

- Daycare is from 7am to 9am and 4pm to 6pm.
- It is supervised by the animators of your child's center. You can sign up for daycare anytime during the summer.
- Every 5 minutes late results in a 5\$ penalty. 1 warning only per family. Consistent lateness or not respecting the daycare hours registered, results in a higher daycare rate. You must sign-in and out your child at the "daycare desk".
- Daycare will be at your child's center except Teen Spirit which will be with grades 5 and 6.
- In the case of the ball hockey camp, morning daycare will be at Michealangelo school and afternoon daycare will be at the YLC 3rd floor with Grades 5 and 6 and Teen Spirit.

Question 3: What should my child bring every day?

It is important that your child brings the following items on a daily basis (Some of these can be left at the center):

- Sun block lotion (30+). You must apply the cream before coming to camp. We will reapply during the day for the younger levels. The older children are expected to put it on by themselves (with our assistance).
- A healthy lunch and snacks. NO PRODUCTS WITH NUTS. We do not use microwaves. Please make sure your child(ren) lunches are tightly sealed and cool.
- A lock for bike and the public pool (grades 3 and up).
- Bathing suit and towel.
- Water bottle.
- Baseball cap.
- Running shoes WITH socks.
- 2 bus tickets (for long walks) that will be left with the animator. Please note there will be an approximate charge of 20\$ for the camp year for the grades 5, 6, Teen Spirit and Ball Hockey who will frequent a bigger swimming pool in Pointes aux Trembles.

- Please keep in mind that we are not responsible for lost, stolen or damaged items.
- The majority of the day will be spent outside. They will take breaks throughout the day and where possible, in the shade.



Question 4: Can parents volunteer on outings?

- Yes! Providing there is a need or space for extra supervision. Give your name to your child's coordinator. If there is a need we will contact you.
- Please keep in mind that parents will NOT be put in the same group as their child. This is based on experience that we sometimes have to "supervise" the parent. No snacks can be purchased by the parent on outings.
- Please notify the coordinator if you are interested.

Question 5: Where will the campers go swimming?

- "Smiley Bunch" K-camp, grades 1 and 2 will go swimming at the indoor Centre Aquatique of R.D.P (at Jean Grou High school)
- OR Alexis Carrel outside kiddie pool providing we have the proper supervision (ratio 1:3). The water will never be higher than the hips of a standing child.
- If the pools are not available or we can't reach our ratio, water activities will be planned at Samuel Morse Park and at Michelangelo school. It is from our experience that children of this age group just enjoy "getting wet".
- The older levels (grades 3 and up) will for the majority of the time, go to Alexis Carrel outdoor pool or the pool at Pointes aux Trembles.
- If you can help with supervision, please give your name to the animator or coordinator.

Question 6: How is the day / week structured?

- The day will range from quiet to semi-active to active activities according to the physical and social development of the particular age group.
- The week is comprised of theme days, outings, games, songs, FaithSpace, special events, swimming and sport activities.
- Most of the activities will take place at your child's respective center and immediate surroundings. Activities range from social, educational, cultural to recreational programming.
- Animators will follow an approved daily plan from the coordinator for the day.
- For "Smiley Bunch" we also offer nap time or "quiet time" in the afternoon (30-45 minutes).
- You will receive a Parent Information booklet with the camp calendar and other important information describing your child's summer experience and expectations on the first day of camp.

Question 7: How do outings work?

- There is usually one outing per week. All the outings are incorporated into the registration fee (that means they are free). "Major-outings" are by yellow bus and Mini-outings are by city transportation. (Bus tickets are provided by parents).
- You will receive the outing form on the first day of camp. Please check off which outings you would like your child to attend. If anything changes, let us know the latest TWO DAYS BEFORE THE OUTING.
- No permission slips for major outings will be accepted on the day of the outing. It is not meant to exclude campers but rather to ensure proper supervision and space in the yellow buses.
- Please follow the procedures on that particular form.
- Parents who choose not to send their child on an outing have the option of leaving their child at camp for the day. If there is less than 20% of the campers at a center staying back on a major outing, they will then be put at another center for the day.
- No campers will be allowed to stay back on our "UNIVERSAL OUTINGS-PLAGE DES ILES" (sometime in the middle of July). If you choose not to send your child, they will have to stay home as the whole staff will be on this outing.

- There are no mini-outings for Smiley Bunch k-camp. All their outings are by yellow school bus.
- Strict rules are applied by the animators and reinforced by the coordinators for all outings and public transportation. A review of safety procedures is also done with the campers.

Question 8: How does early dismissal and absence procedure work?

- A note is required by the parent (in advance) to be given DIRECTLY to the animator. Campers will only be dismissed at the respective center.
- In particular situations, campers can be dismissed at a different site (park, pool, outing, other center...) providing the coordinator speaks to the person who is picking up the child and approves it. No exceptions.
- Please share all personal matters pertaining to your child's safety and well-being with the respective coordinator and / or with Theo Vecera and Anna Tafuto.
- If you are aware that your child will be absent for the day, please send in a note or contact the animator/coordinator so we can reduce our phone calls to the campers homes.



Question 9: Is camp from 9am to 4pm?

- Yes. Dismissal is at 4pm. We ask all parents to be present five minutes earlier to notice your child as they leave the centers.
- **DO NOT DOUBLE PARK! THIS SELFISH ACT IS VERY DANGEROUS!** The police will be doing check-ups and giving tickets on a regular basis. Blatant and repetitive parents who double park will annul their child's camp registration with no refunds given.
- Some animators will be with the dismissed campers outside as they wait for the child to be picked up. However, please keep in mind that the animators have other duties to attend to after camp and it is not their responsibility to continue to supervise after 4pm.
- If you won't be able to make it for 4pm, please contact the coordinator. If need be, please pick up your younger child before the older one.
- Please call if you will be late. Consistent lateness will result in a "supervision/daycare" fee to be paid directly to the coordinator.

Question 10: Does my child have to wear the camp t-shirt every day?

- Camp T-shirts (included with the registration fee) MUST be worn on all outings. This is to enhance identification, safety and supervision during an outing.
- In some cases, we ask the campers to wear their camp T-shirt on special events (e.g. Walk-a-thon, last day of camp, etc...)
- A t-shirt of the same color may be worn (or of previous years) if the camp T-shirt of this year is dirty or for other reasons.
- A replacement fee for a lost t-shirt is 10\$.

Question 11: Can I sponsor or donate?

- Yes! We work on a very tight budget. In most cases, a charity tax receipt can be given. Public acknowledgment is also an option for your business. We are always looking for sports material, arts and crafts, games, office supplies or other material you think that can be beneficial for our camps. Please speak to your coordinator or Theo Vecera @ 514-648-6421 or ylctheo@hotmail.com

Question 12: What is SAFEFUN?

- This is the philosophy of our camp. Our objective is to make sure that the safety of our campers will never be compromised for the sake of fun.
- We take constructive and loving steps to curtail certain behavioural, medical or social problems with our campers. However, we are not obliged to keep any child we feel we are not equipped to handle. This is to ensure the safety of other campers and the staff as a whole.

- This is why we stress an open and honest communication between parents and staff. Let's make the camp enjoyable for all. There are possibilities of "shadows" if need be.
- The more we know, the more we can help!

Camp Facts for you to know!!!

- The camps end on Friday, August 12th as we don't have access to the Schools because of their building preparation for the upcoming school year. We cannot fill up the YLC with the surplus of campers. We also lose 60% of our staff due to them going back to school.



- All staff is paid 30 hours but work 40 hours a week. The 10 hours we save on each camp staff are used to keep camp registration rates low. This is called the "Generosity clause" and it's our way of giving back to the community. We are a non-profit organization.
- All staff are certified first aid and participate in a 2 month training program that is city approved.
- Our camps have been in existence since 1984 and is structured by Theo Vecera since 1994. Theo Vecera has been part of the camp program since 1990. This year, Theo's son Justin Michael and one his daughter's Charleze will be at Smiley Bunch K-camp!
- The camp's goal is to create a safe, varied, cost-efficient, vibrant and memorable camp experience by using a "Big Brother / Big Sister "approach. We are inspired and use Don Bosco's catholic preventative system of Reason, Religion and Kindness.
- That camp is a wonderful tool to assist in the social growth of children. If your child has a special talent or gift, share them with us! If your child has a particular need, share it with us too so we can help to better integrate your child into our camp activities.

EVERY CHILD IS IMPORTANT! EVERY CHILD IS LOVED!

- Note: The receipt given at registration is a general receipt for services rendered. It can be used for income tax purposes. Replacement receipts result in a 5\$ processing fee (which will go to the YLC's after school programming). The YLC business number is (NEQ) 116 020 2231
All information is subject to change. For additional information, please contact the YLC at 514-648-6421.

What will happen on the first day of camp?

1. Report to your child's center. You are welcomed to stay for a little while.
 - a. Smiley Bunch: Maria Ausiliatrice Church Hall
 - b. Grades 1+2: Leonardo Da Vinci school gymnasium
 - c. Grades 3+4: YLC 2nd floor
 - d. Grades 5+6: YLC 3rd floor
 - e. Teen Spirit: YLC Lounge room
 - f. Ball Hockey camp: Michelangelo school gymnasium
2. Registration will be done by the animators and a big general assembly will be done welcoming the campers. If for some reason your child is not on the "list", don't panic, we'll solve the problem quickly 😊
3. The campers will then be put into groups after the assembly and start their day.
4. The Animators during the morning will animate different styles of "get to know you" games and activities. The afternoon will be regular activities in relation to the group's age.
5. At the end of the day, please check your child(s) backpack for their center's camp program booklet. In the booklet, you will have the full 6 week schedule and other camp information.

Other important notes!

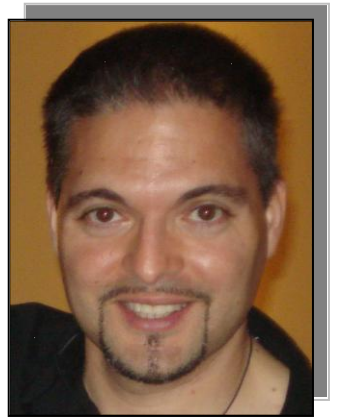
- a. If your child is in daycare, the "drop-off" and "pick-up" is at their respective center.
- b. For some younger children, there is usually a three day adjustment period (average). If there are any helpful tips that can assist us, please share it with your child's animator and coordinator.
- c. You can always add daycare or extra weeks as the camp season progresses.
- d. Your child will receive the red camper t-shirt during the first week.
- e. Don't forget to read the "Common Parent camp Questions and Answers" info guide!!!
- f. We're always available to answer your few (or many) questions, don't be shy to call or email us!!!

Camp Coordinating staff 2010

About Theo Vecera

www.theovecera.com

"A true voice of the community"



Theo has been actively involved in the community since 1990 and is the co-founder and Program Coordinator of the Don Bosco Youth Leadership Centre (YLC). Theo has been working every summer at camp since 1990 and has been responsible for the coordination since 1994.

Theo is a resident of RDP since 1980. He's been happily married for the last six years and has four beautiful children (aged 7 months, 3 years, 4 years and 6 years). Two of his children will be at Smiley Bunch K-camp this summer!

Theo's passion is with youth; offering them different types of activities, developing their leadership skills and helping them to express their skills and talents. His personal philosophy is that "No young person is invisible. Everyone is someone."

He also enjoys providing opportunities for adults to give back to the community. Theo accomplishes this objective by addressing their social and recreational needs and in turn, challenging them to have a social responsibility and accountability to their community.

His dreams continue to evolve as Theo is constantly looking at how we as a community, can reach out to more youth, adults and families. Not only in program planning but in creating awareness that all of us can make a positive impact by sharing our resources, skills and talents.

Many exciting projects are in development. Join the team! Here are three of them that you may be able to assist with (resources, experience, sponsorship, other). Please contact Theo at ylctheo@hotmail.com for more information

Fantastica.ca: An interactive online community for young people/adults to express their talents and to network their skills.

Family services Network: "Addressing needs and lack of services in the east-end/RDP in particular for English speaking families."

Ball hockey outdoor facility: "With one of the highest ratio of young people in the City of Montreal, it is time to establish facilities that can give young people and adults a social, recreational and physical outlet. This can be a wonderful preventative tool for keeping young people out of trouble and being honest and productive citizens."

Check this out!

For info: Speak to Theo

or by email ylctheo@hotmail.com

Sponsor a camper outing/special event this summer!



There are many other outings that we would like to include for your child's enjoyment during the summer. For 500\$ (which includes a charity receipt) we will give out your company's business to every child at camp and include a link to your website to our heavy traffic website (dbylc.com). We will also mention on our site and our weekly camp bulletin what you sponsored with your company's info.

Join our recreational outdoor soccer league (men 25+)

Sign up your team or as a "free agent" (which means we'll put you in a team). Visit qrsl.ca for more information. League is every Sunday night at St. Jean Vianney Sports Complexe (in RDP) from 6pm to 9pm. 1400\$ per team or 100\$ per free agent. Also join our Recreational Ball Hockey League RBHL.ca in the summer or fall!!!



Hockey jerseys, cards, comic books, DVD's, collectibles, more!

Visit theovecera.com and scroll down on the home page and click on one of the many description categories. Willing to trade as well. Great prices.

Can you sponsor goods or items for camp? YLC?

We're always on the lookout for arts and crafts materials, sports equipment, games and other items that can be beneficial for the youth of our community!

